

NINTENDO

Family Computer

Family Computer and Famicom are trademarks of the Nintendo Corporation.

登録商標です。

地獄に暴丸

JIGOKU GOKURAKUMARU

とりあつかいせつめいしょ

取扱説明書

Instruction manual

©1990 EXE / TBS / DAIO PAPER CORPORATION / KANEMATSU CORPORATION

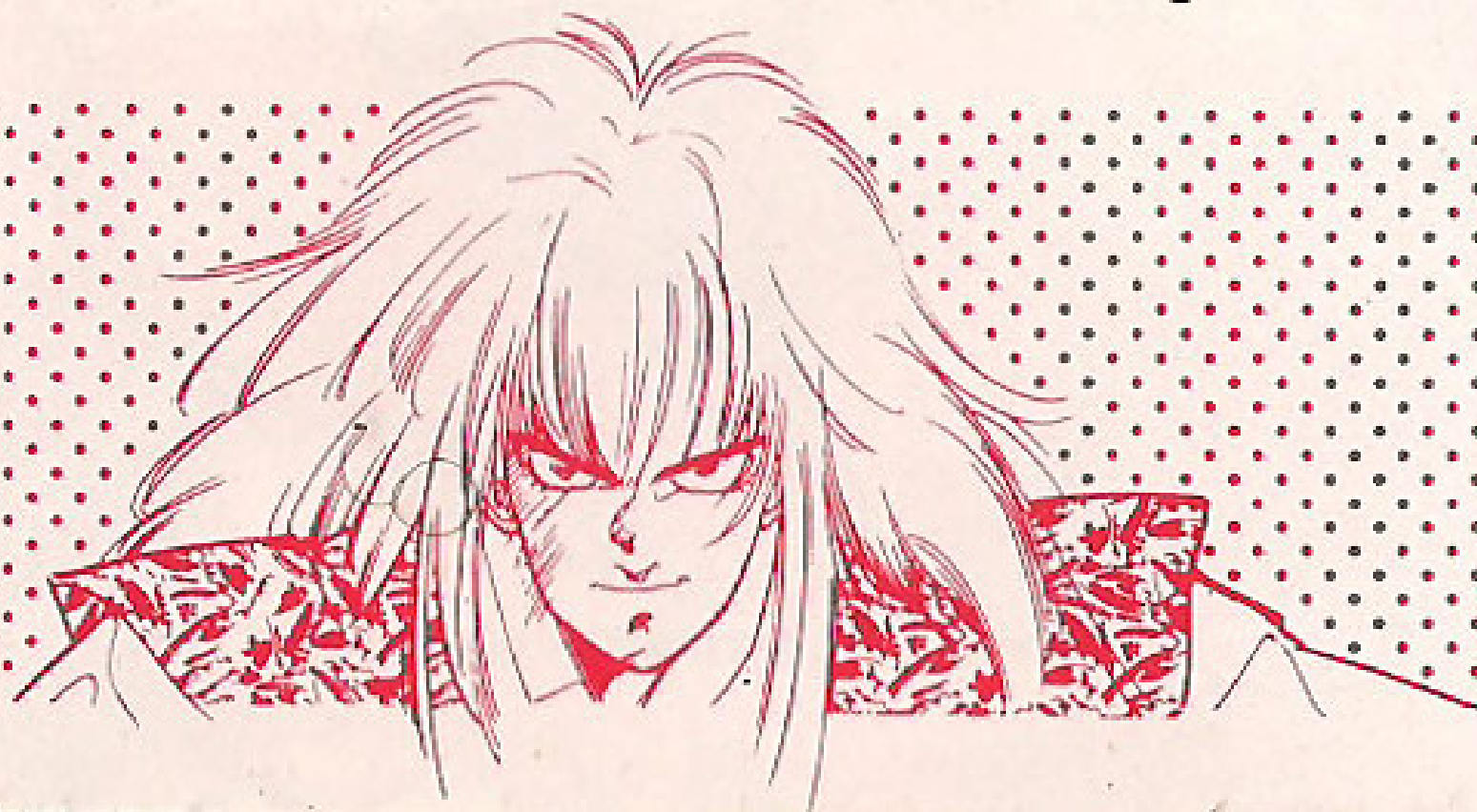
©1990 PACK-IN-VIDEO CO., LTD.

PAC-9Z

FAMICOM FAMILI

First of all...

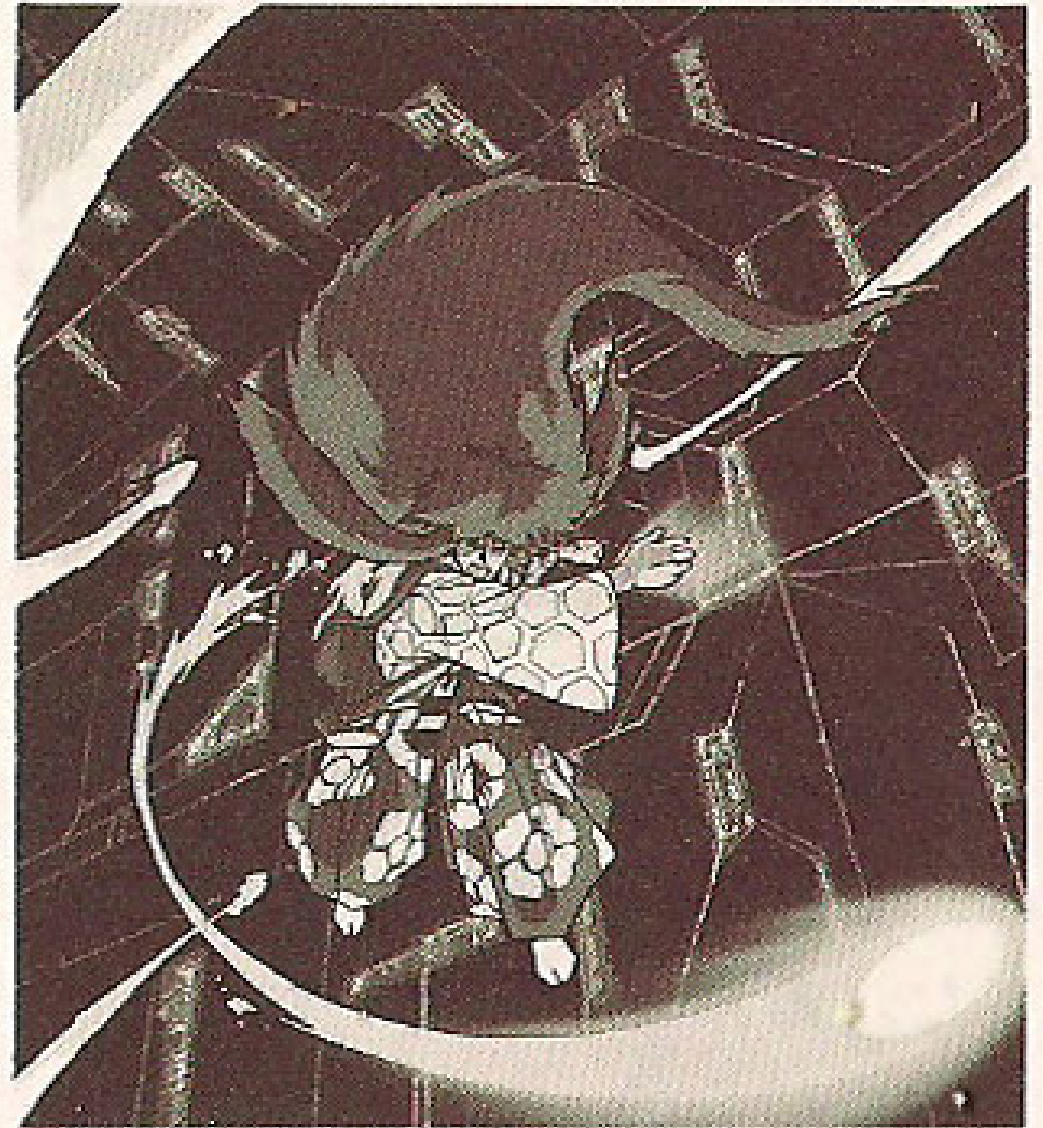
We wish to take this opportunity sincerely thank you for purchasing “JIGOKU GOKURAKUMARU”. Please carefully read this “instruction manual” before playing, as to come to a clear understanding of the proper method for enjoying this game. Also, please carefully store this “instruction manual” in a safe place.



地獄極楽丸

CONTENTS

- | | |
|------------------------------|----|
| 1 . Story | 4 |
| 2 . How to play | 6 |
| ● Starting the game | |
| ● Rules of the game | |
| ● The game screen | |
| 3 . Controls | 8 |
| ● Parts of the controller | |
| ● Attacking | |
| ● Moving | |
| 4 . Selecting weapons | 10 |
| 5 . Items and their effects | 11 |
| 6 . Battle stages and bosses | 12 |



1. STORY

☯ The Near-Future Wars begin!

A long, long time ago, a man challenged the castle of the Golden Kingdom, Zipang. His name was Jigoku Gokurakumaru. Time passes by...

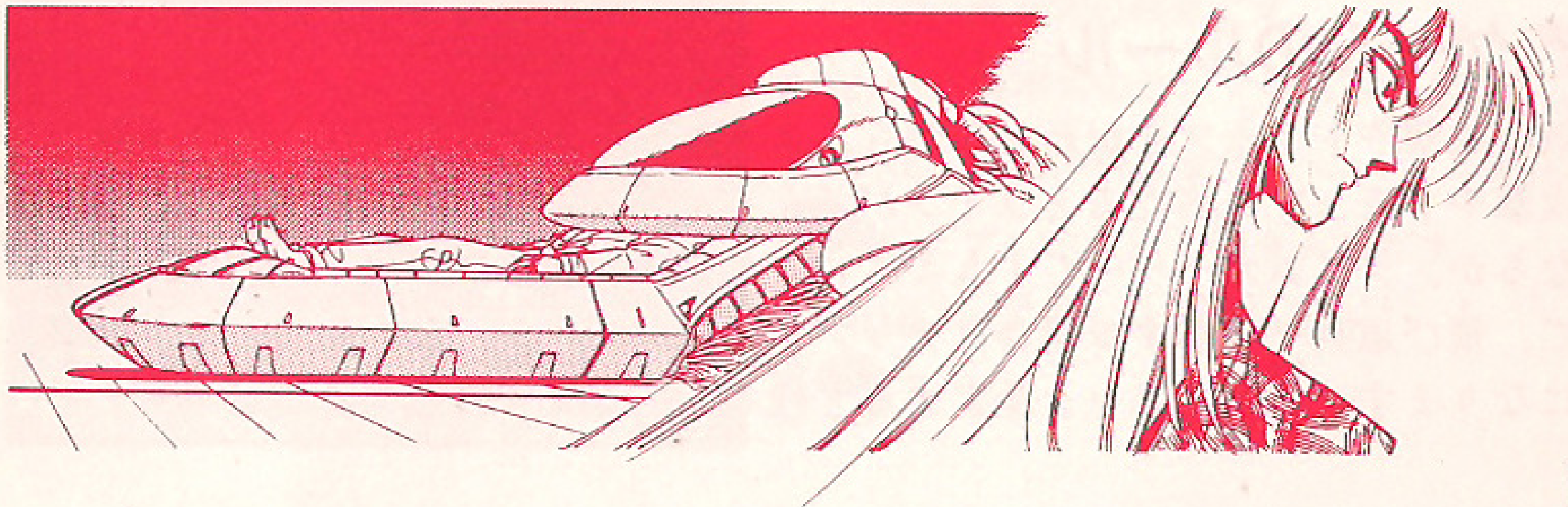
The year is now 2015, and the human race has at least completed installation of a computer system that will control all government processes, so that they might live in peaceful comfort.

However, just as the system is engaged, an intruder hacks into the system, gaining complete control over the main computer.

The program is modified, its protection measures strengthened to forbid access to any other user. Various countermeasures are considered and executed; they all end in failure. It was then that they decide to use their trump card.



The Psy Converter System, yet a prototype, is injected into the system. The Psy Converter System is a computer program with a human consciousness. When uploaded into a computer, it moves about freely. No one quite knew what form this human consciousness would take within the space of computer data. Of all the personal data files of countless humans, the one chosen for this dangerous mission was that of a fifteen-year old young man, distant blood relative of Jigoku Gokurakumar. Will he be able to decrypt the barrier of protection currently blocking access to the system? And who might be behind this whole plot...?



2. HOW TO PLAY

Starting the game

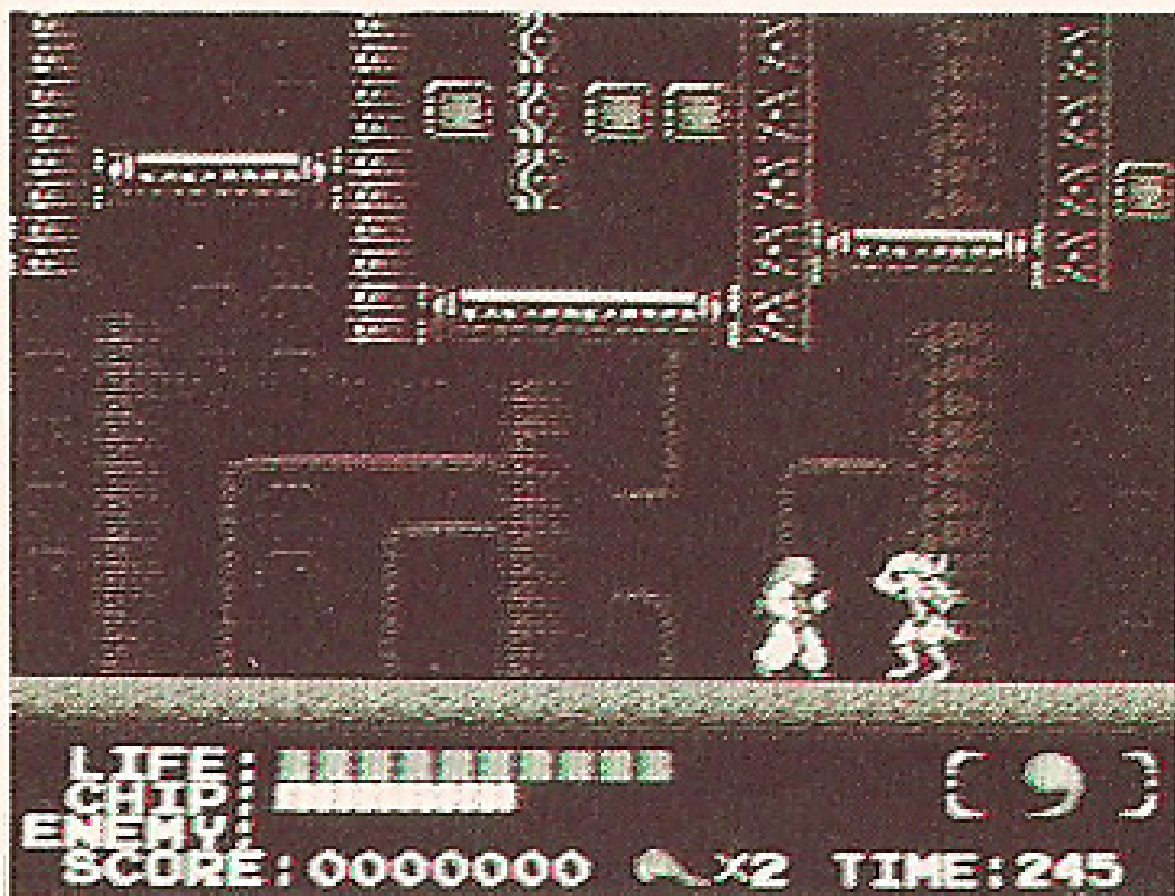
Press the Start Button to begin the game. You, the player, will assume the role of the young hero, and then proceed to clear stages. A boss guards the end of each stage; if you defeat the boss, you clear the stage. There are six stages in total.

Rules of the game

Proceed in the direction the screen scrolls, while dodging enemy attacks and avoiding traps. As you touch enemies' attacks or traps, your life will gradually decrease. If your life or the time limit runs out, you will lose one life. There are two ways to attack enemies: expend chips to use projectile weapons, or, if you run out of chips, you will use standard attacks. At the end of each stage, you will be awarded bonus points based on your remaining life and chips.

Before the next area begins, you will be awarded four life units and six chips in addition to what remained at the end of the previous stage. You will be awarded a 1up item for every 10,000 points you score. This will increase your stock of remaining lives by one. You can have up to nine remaining lives at any given time. If you lose all your lives, it's Game Over.

THE GAME SCREEN




LIFE : Your remaining hit points.


CHIP : Your remaining chips.

ENEMY : The remaining life of the boss.

SCORE : Your current score.

 : Your remaining lives.

TIME : The amount of time remaining.

[] : Your currently selected weapon.

3. CONTROLS

Parts of the controller

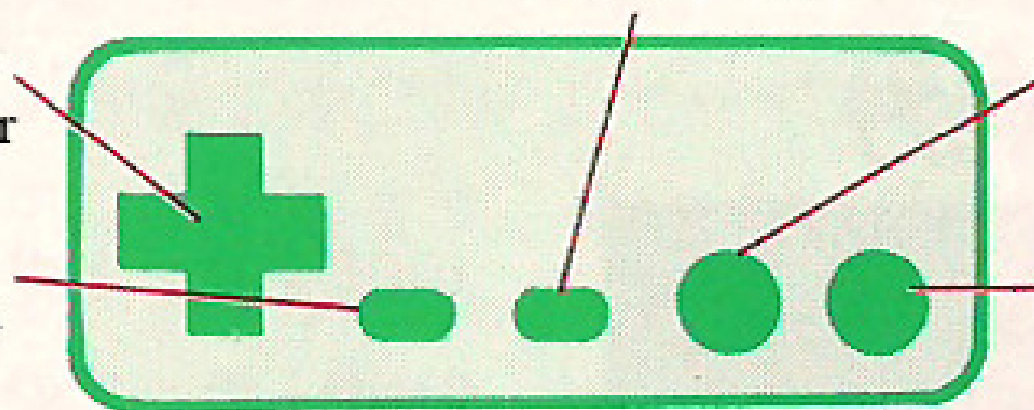
Control Pad
Moves the player character

Select Button
Change the weapon used
with the B Button

Start Button
Pause the game

B Button
Attack using a weapon

A Button
Jump

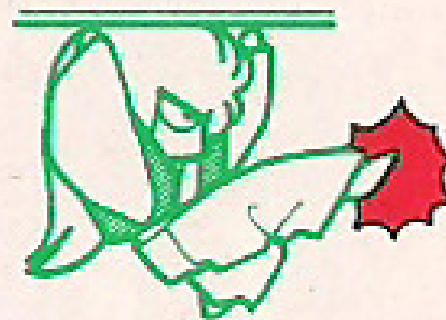


Attacking

Press the Select Button to choose a weapon, and then use the B Button to attack. Standard attacks include Hair / Punch / Kick. You can select weapons even while the game is paused



Attack while crouching
to punch!



Attack while hanging
to kick!



Attack enemies far away
with projectiles!

Moving

Use the control pad to move left and right. Press down to crouch, or the A button to jump. When jumping, if there's a block (or other item), you can grab onto it.

Moving while hanging

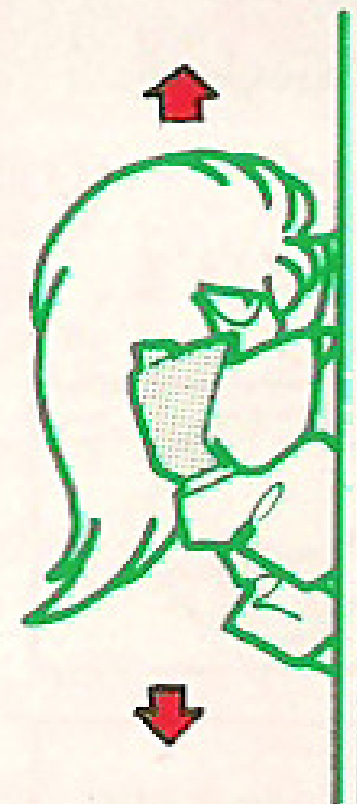


Press the A Button while hanging to move forward by flipping!



Move by jumping

By holding down the A Button, you can finely control the height and distance of your jump!

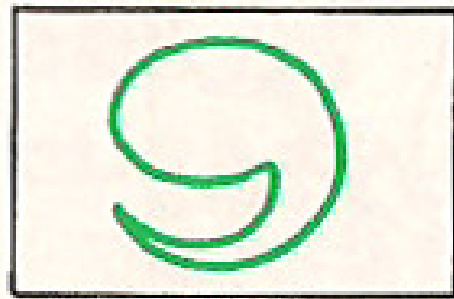


Moving up and down

Press the control pad up or down to move on a ladder. You can let go by pressing the A Button!

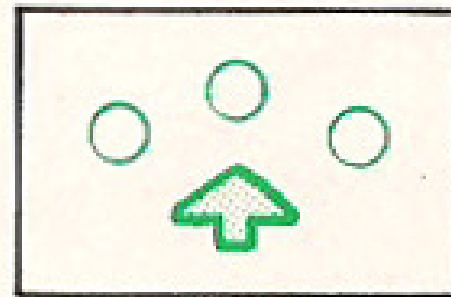
4. SELECTING WEAPONS

The player only has two weapons in the beginning. However, as you complete stages, you'll earn new weapons, until you eventually have all six!



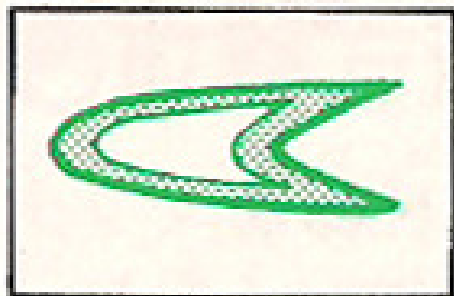
Standard attack

Attack enemies at a short range.
Doesn't use chips.



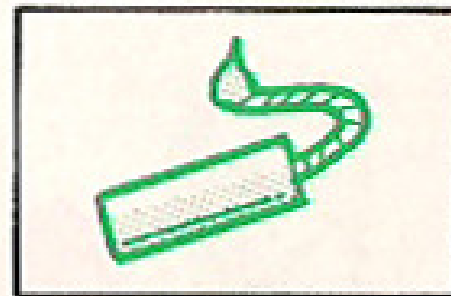
Wide beam

You can attack in three directions at once. Uses two chips.



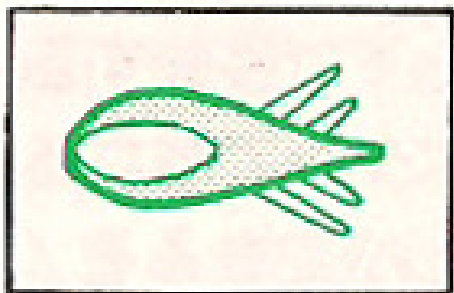
Shuriken

Attack by throwing shuriken.
Uses one chip.



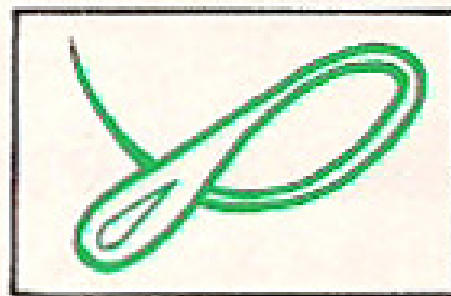
Bombs

Explode when they hit enemies or walls. Uses three chips.



Piercing bullets

Penetrates enemies.
Uses two chips.



Homing

Will follow enemies for a short time. Uses four chips.

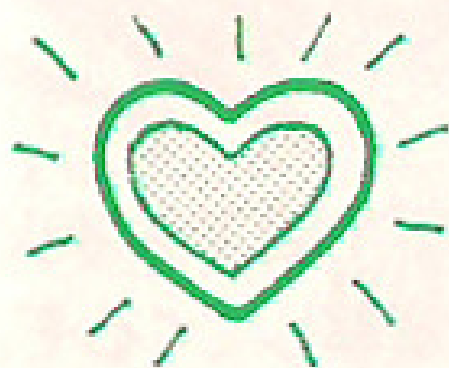
5. ITEMS AND THEIR EFFECTS

Items appear as you defeat enemies.
Items will disappear after a set time has passed.
You should absolutely try to pick up all items.



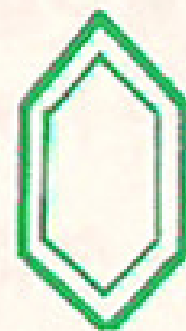
Heart

Will recover one life point.



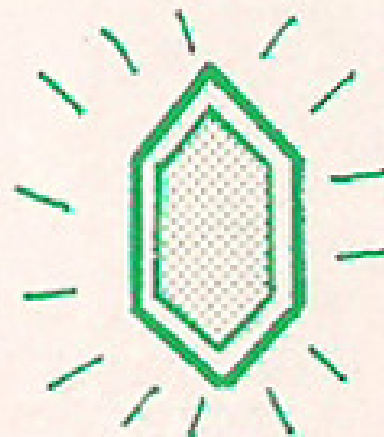
Power Heart

Flashing hearts will recover
three life points!



Chip

Increases your chip
points by one.



Hyper Chip

Flashing chips will
restore three chip points!



1UP

You will earn one extra life.
Don't let this one get away!

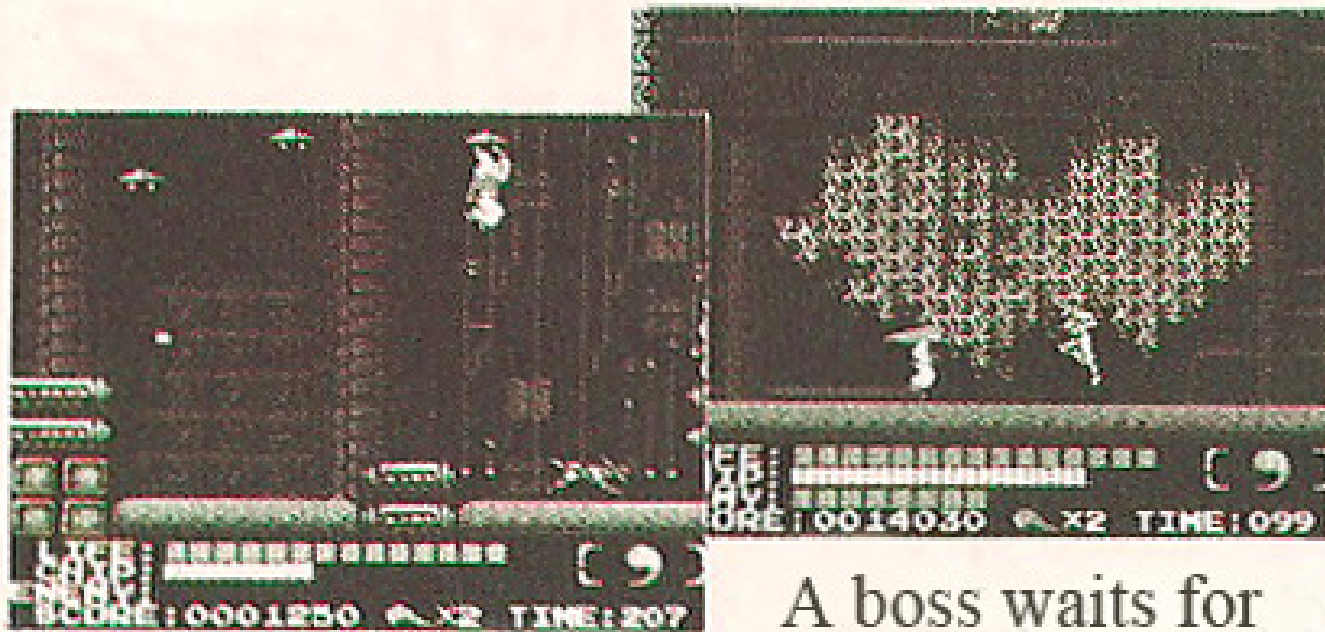
6. BATTLE STAGES AND BOSSES

Allow us to introduce the stages of this computer world.

A boss awaits at the end of each stage!

Surmount the countless enemies and traps, and save the world!

Stage 1  Hacking into the computer



Use this stage to
learn your basic moves.

A boss waits for
you at the end
of every stage.



The boss of Stage 1 will attack
you with pillars of fire.

Stage 2

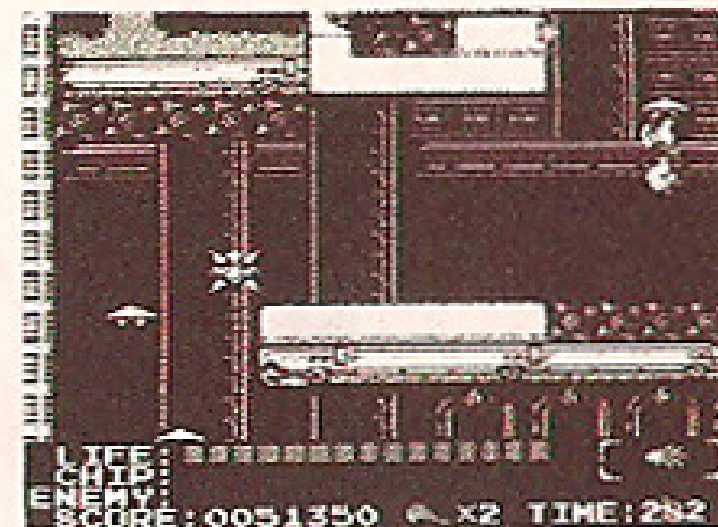
- Release the system protection!



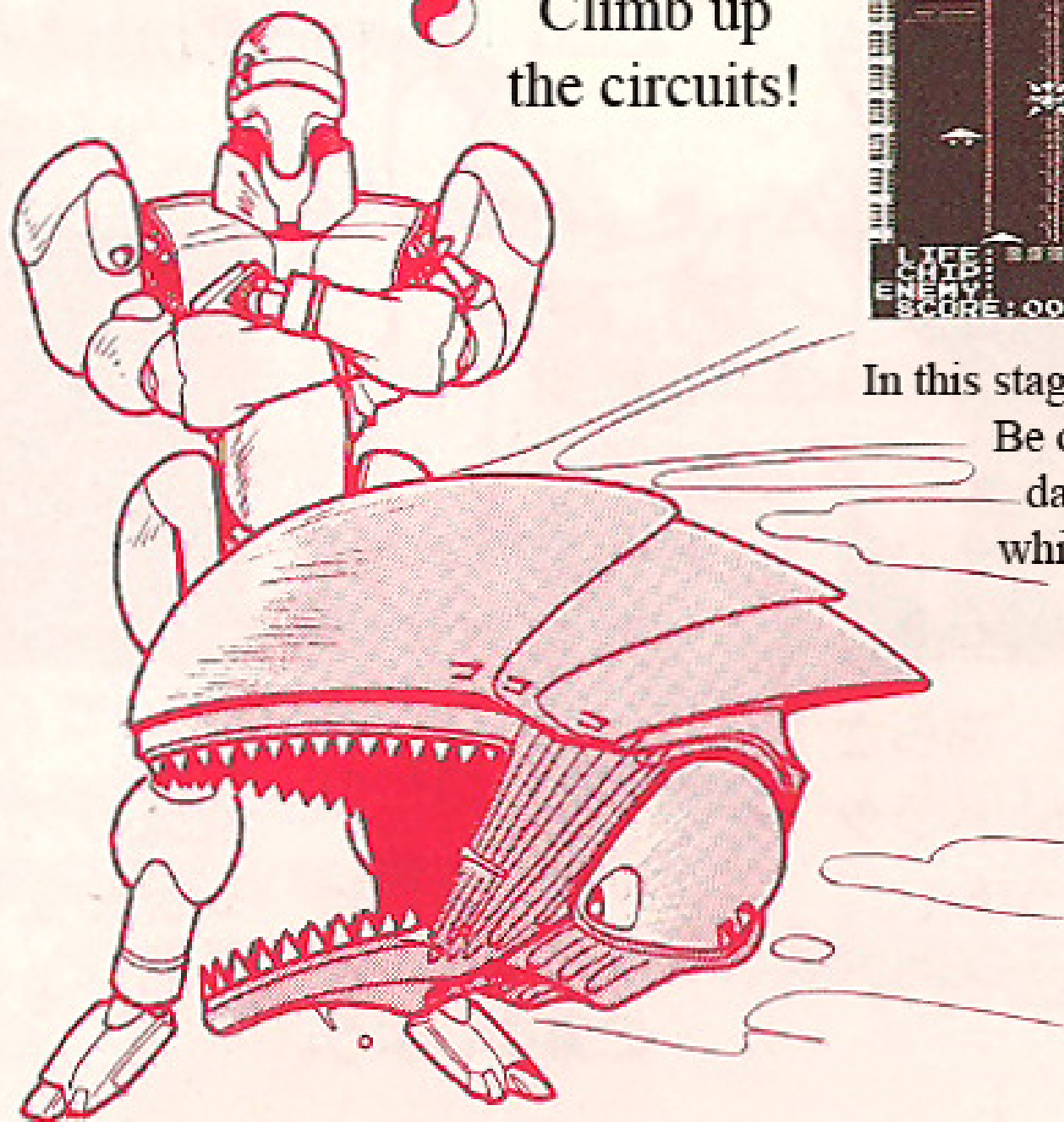
This stage is divided into two areas.
In the second half of the stage,
you'll be descending.
The boss uses an illusion technique.

Stage 3

- Climb up the circuits!

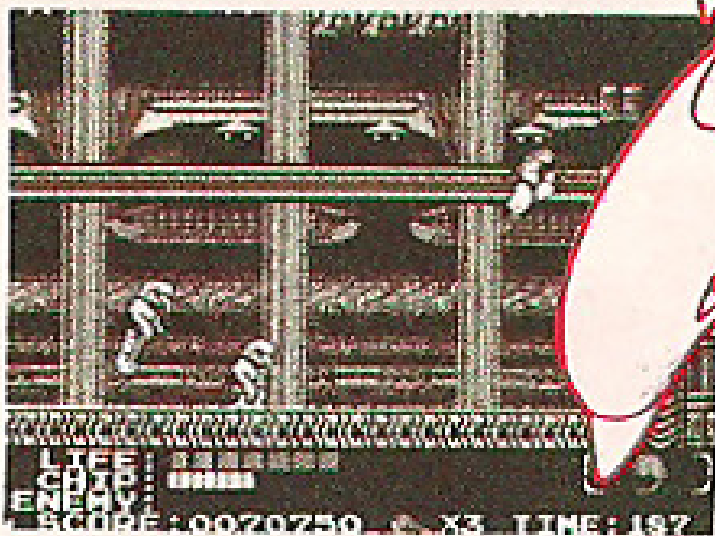


In this stage, you'll be moving up.
Be careful: you can't
damage the boss
while he's in the air.



Stage 4

- ☯ All the riddles solved...

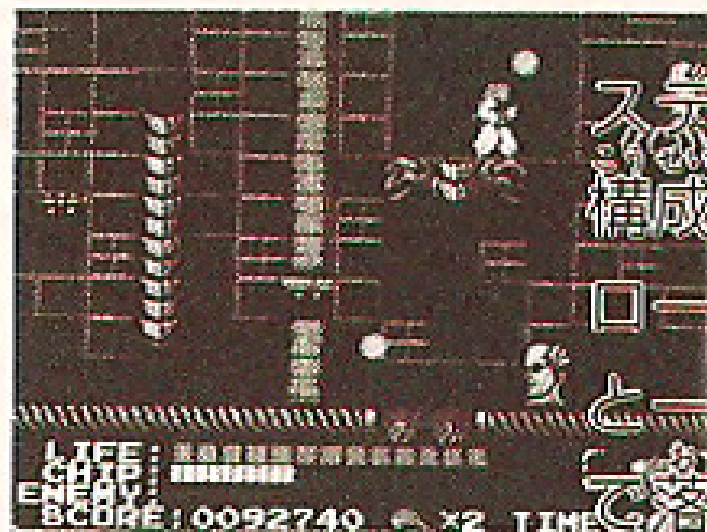


You'll find yourself shimmying a lot in this stage. Use careful timing: lots of traps are about.

The main console and its two subordinate machines will attack you. Try to concentrate on the main console.

Stage 5

- ☯ The final barrier!



Stage 5, too, consists of two parts. The first part scrolls upward. Don't fall, or you'll lose a life!

Release the final system lock, and you'll reveal the identity of the enemy who hijacked the computer system. The final battle awaits . . .

CAUTION

- 1.) Please always be sure to remove the AC adaptor from the power outlet whenever you finish playing.
- 2.) Please sit as far from the TV as is possible while playing games.
- 3.) If playing games for a long while, try to take a short ten- to fifteen-minute break every two hours.
- 4.) This product is sensitive. Please do not store it in a place where it will be subject to extreme temperatures, and avoid electrical shock. Also, please do not disassemble the equipment.
- 5.) Please do not touch the connectors, or allow them to get wet. This will void the warranty.
- 6.) Please do not attempt to clean with thinner, benzine, or alcohol.

FOR SALE and USE IN JAPAN ONLY

Rental, resale, or promotional use of this item is prohibited.



Pack In Video, Incorporated

〒 Tokyo-to Chuo-ku Ginza 6-13-16 Ginza Wall Building 6F

TEL (03)5565-8732